



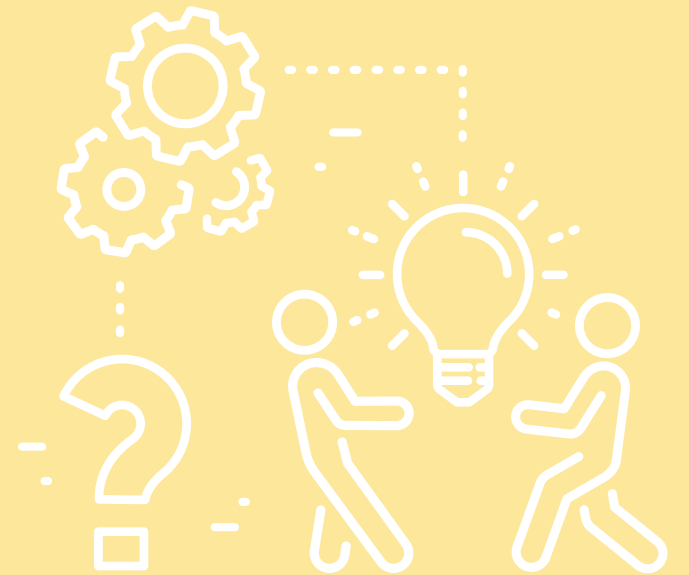
Composable Integration Platform

The ultimate platform for System Integrators to connect various building or workplace systems and processes, providing customised and flexible solutions for client requirements, without the hassle of complex coding, reconfiguration or system overhauls.

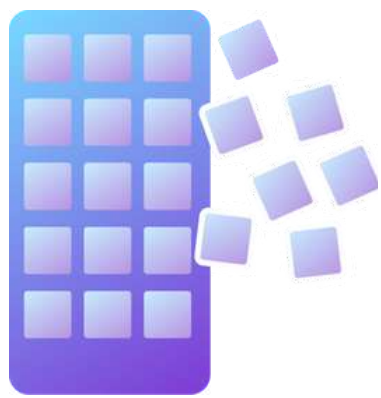


The Problem

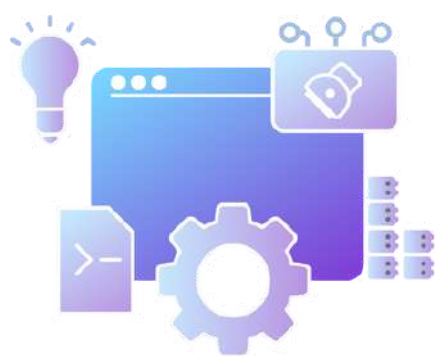
Smart buildings and workplaces rely on different systems to work together. But current connections are fragile and hard to change, and available tools don't fit well in real estate. Better solutions are needed for smarter spaces.



The Solution



Choose the most suitable apps and services to work with existing systems



Seamlessly integrate everything



Fulfill customer demands and provide enhanced user experiences

Who is the Integration Platform made for?

System Integrators (SIs)

SIs can integrate multiple apps and systems, giving customers a unified view of all their applications in one place, with dashboards, automated workflows and mobile access.



Integration

Built-in Connectivity

SIs have ready connectors for integration with



Seamless Cloud Integration

Secure on-premise to cloud connections, enabling extensive integration with IoT and cloud applications.



Enhanced Integrations

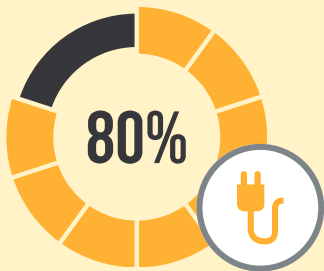
Improve third-party integrations with systems such as lighting, comfort, scheduling, energy data, IoT, and more.



What Makes Lucy Different?



Customisable visualisations and dashboards provide graphical data and insights in one place



Cost of connector development/integration reduced by up to 80%



Pre-built templates for integrations and workflows



New capabilities through consolidated out-of-the-box analytics and user journeys

Outcomes

Attract Premier Tenants

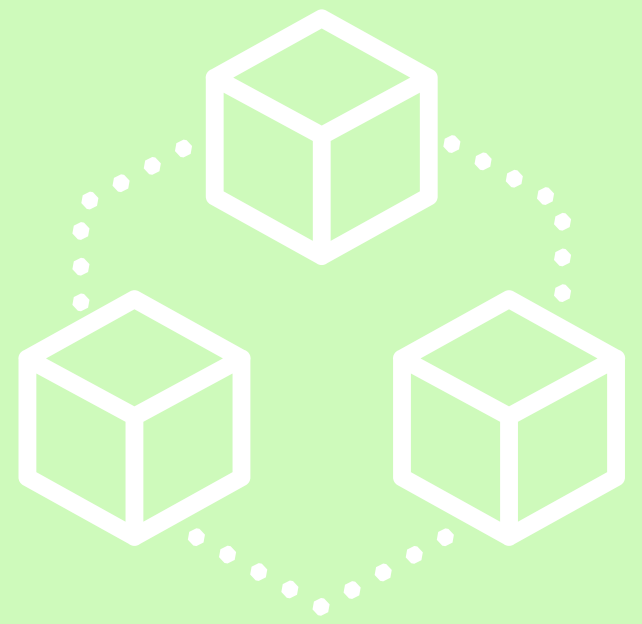
Visualise Integrations & Data

Elevate Customer Experience

Make Use of Multiple Data Sources

Create New Business Opportunities

How Does the Integration Platform Work?



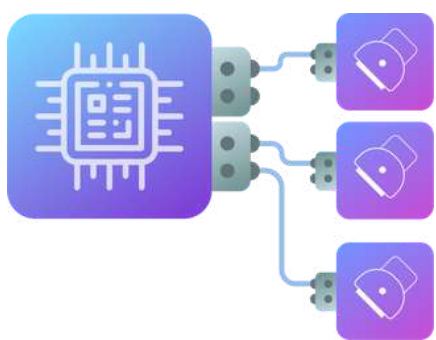
Built on the concept of Models, the Lucy Integration Platform includes an extensive ecosystem of Connectors.

Platform



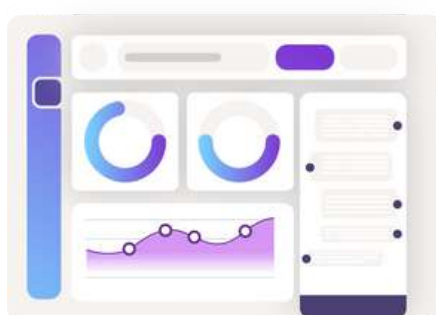
1. CONNECT

Connectors let the platform communicate securely with cloud services, workplace apps, control systems, devices, and protocols, to exchange data. It offers tools to create new connectors or adjust existing ones.



2. INTEGRATE

Models are reusable parts that store data and the logic of how your business works. Create models for equipment, spaces, external systems, workflows, and people. Connect these models to build a Digital Twin of your workplace.

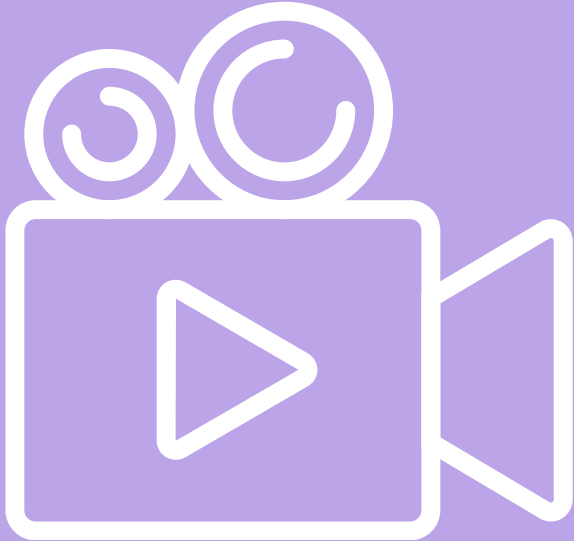


3. INTERACT

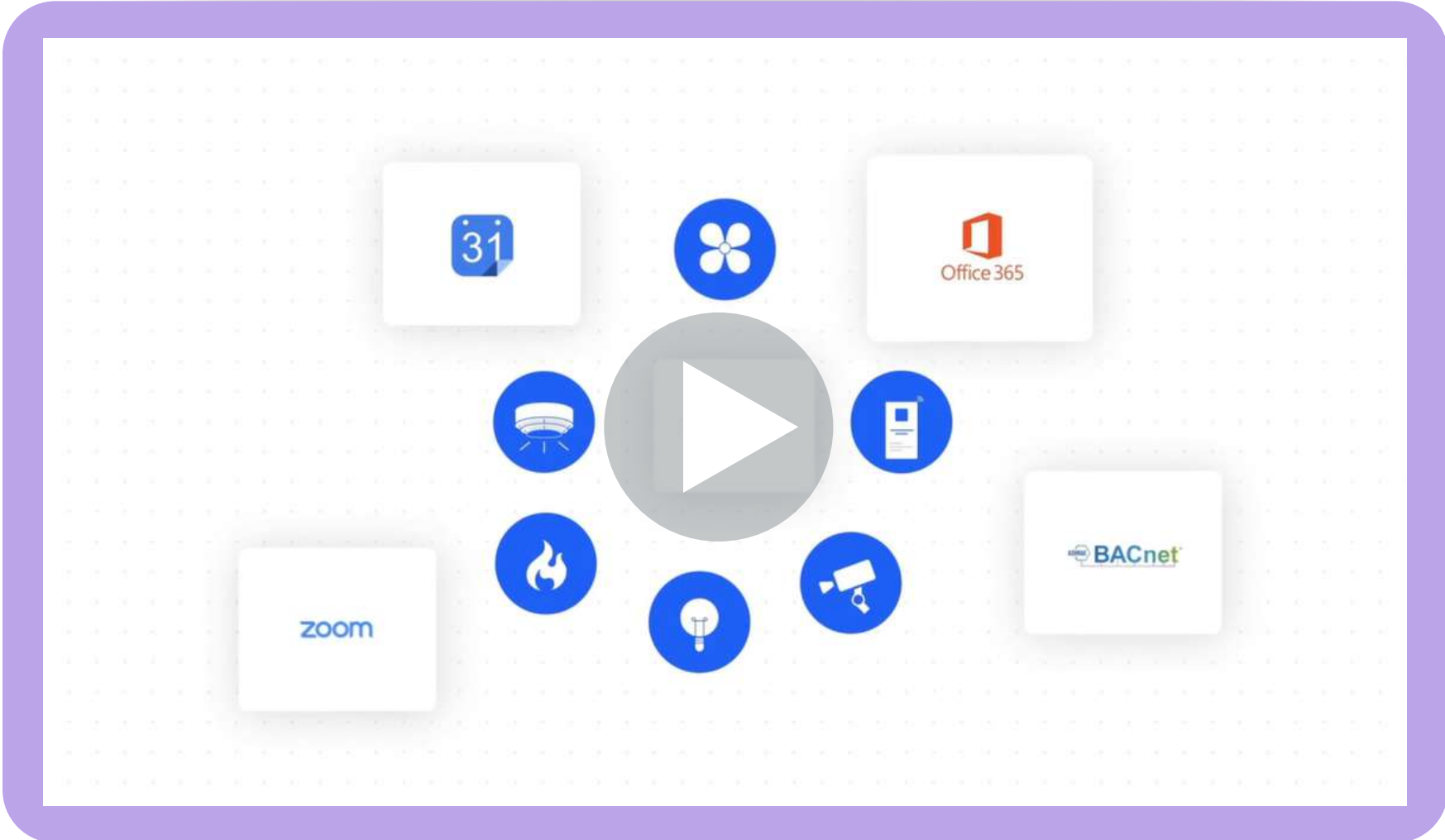
The Experience Portal tools interact, analyse and understand your workplace. It provides dynamic dashboards for insights into how your workplace operates, enhancing data, experiences and building efficiency.

Take A Closer Look

See how Lucy can transform your workplace and spaces with simple integration, effortless component replacement and upgrades, and more.



Video



Scan QR code to watch video



Case Study

Smart Estate Platform for an Urban Precinct in Thailand



The Smart Estate Platform project aims at establishing a cutting-edge, sustainable and seamlessly integrated precinct that encompasses a diverse array of functions, from upscale residential and Grade-A commercial towers to vibrant retail, world-class hospitality and expansive recreational spaces.

The Lucy Composable Integration Platform plays a core role in the project, by bridging the gap between the numerous building systems and processes, making communication, user experience and system operations more efficient and more convenient to use. This saves times, reduces errors and enables systems to work together and stay updated without the hassle of utilising complex processes.

The Integration Platform enables a pioneering model of modern precincts that intertwines luxury, innovation and environmental consciousness, thereby reshaping possibilities for the community and setting a precedent for future developments.



Scan QR code to read our case study.



Connect with us at
sales@iviva.com



Visit our [website](http://iviva.com)

iviva.com